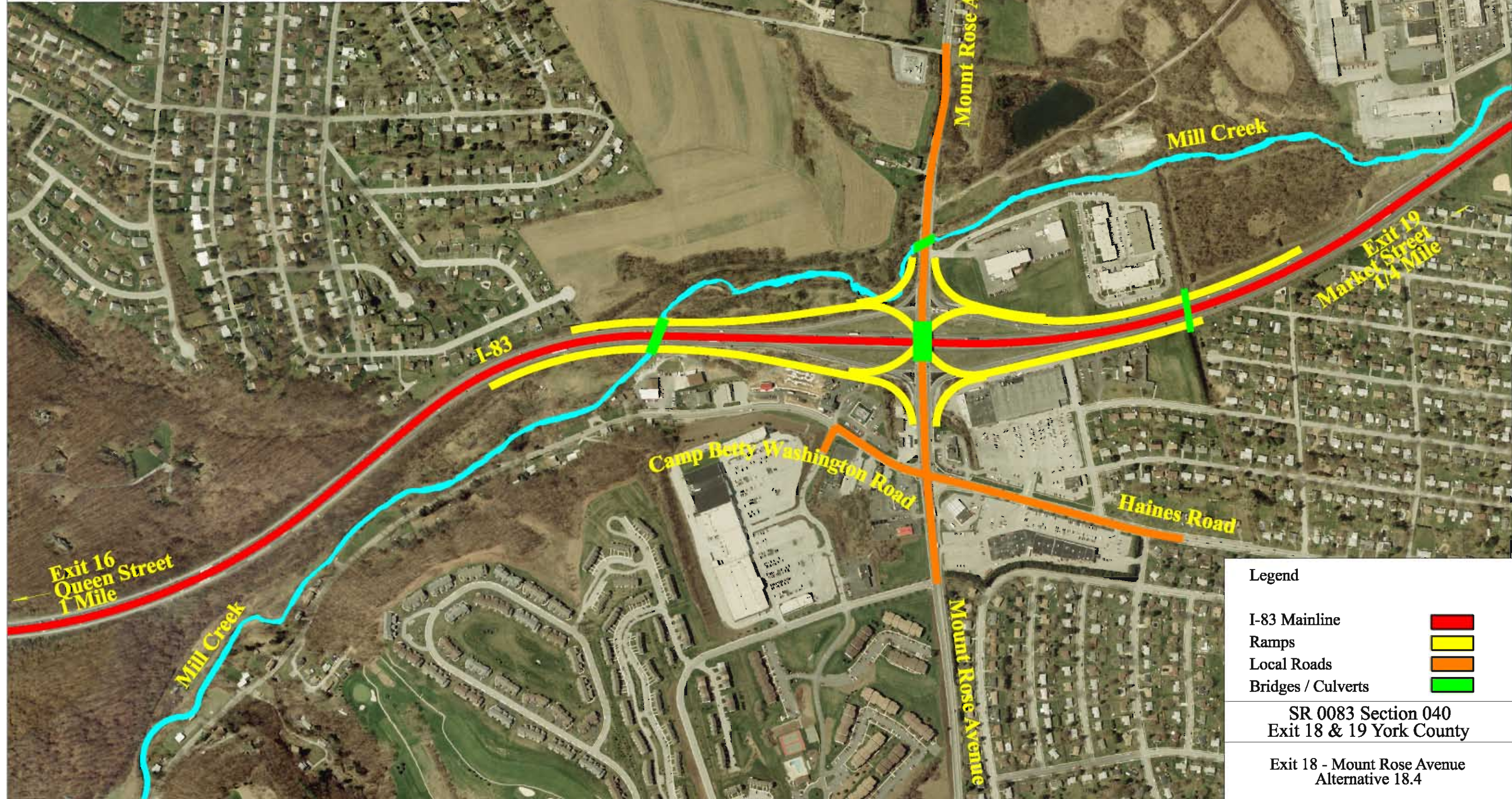
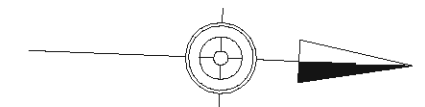


- A Single Point Urban Interchange (SPUI) brings all interchange ramp approaches to a common signalized intersection.
- Minimal right-of-way impact
- Improved Traffic Flow on Mount Rose Avenue by eliminating a traffic signal and adds ramp capacity
- Requires complicated design and construction of proposed Mount Rose Avenue Bridge over I-83.
- Poor operational performance due to unbalanced traffic volumes
- **Estimated construction cost: \$32 Million. (Does not include Right-of-Way acquisition or utility relocation)**



Legend

I-83 Mainline	
Ramps	
Local Roads	
Bridges / Culverts	

SR 0083 Section 040
Exit 18 & 19 York County

Exit 18 - Mount Rose Avenue
Alternative 18.4