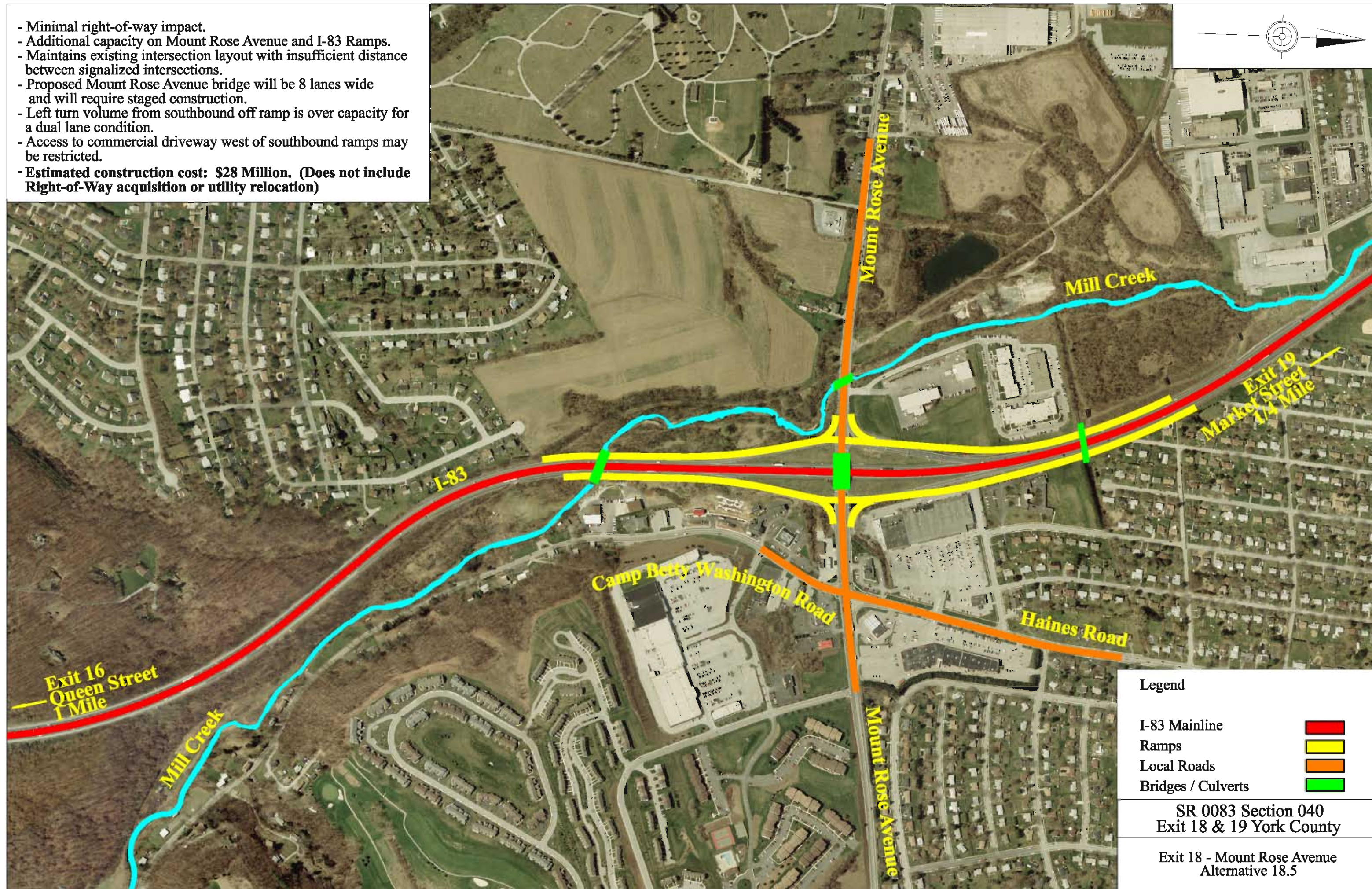
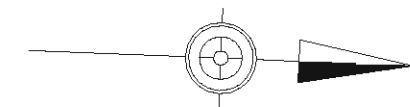


- Minimal right-of-way impact.
- Additional capacity on Mount Rose Avenue and I-83 Ramps.
- Maintains existing intersection layout with insufficient distance between signalized intersections.
- Proposed Mount Rose Avenue bridge will be 8 lanes wide and will require staged construction.
- Left turn volume from southbound off ramp is over capacity for a dual lane condition.
- Access to commercial driveway west of southbound ramps may be restricted.
- **Estimated construction cost: \$28 Million. (Does not include Right-of-Way acquisition or utility relocation)**



Legend	
I-83 Mainline	
Ramps	
Local Roads	
Bridges / Culverts	

SR 0083 Section 040
Exit 18 & 19 York County

Exit 18 - Mount Rose Avenue
Alternative 18.5