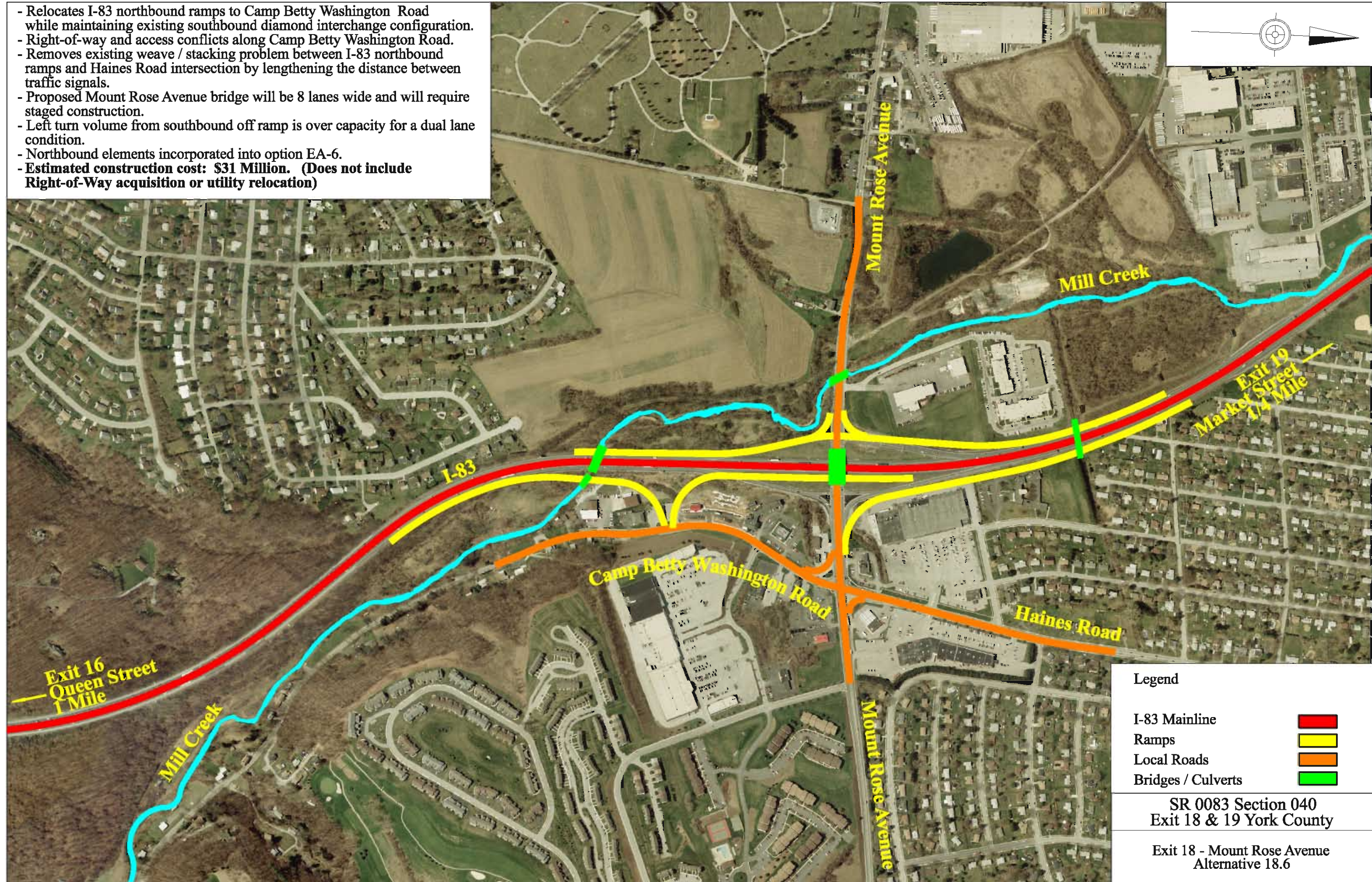
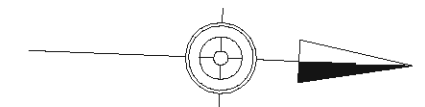


- Relocates I-83 northbound ramps to Camp Betty Washington Road while maintaining existing southbound diamond interchange configuration.
- Right-of-way and access conflicts along Camp Betty Washington Road.
- Removes existing weave / stacking problem between I-83 northbound ramps and Haines Road intersection by lengthening the distance between traffic signals.
- Proposed Mount Rose Avenue bridge will be 8 lanes wide and will require staged construction.
- Left turn volume from southbound off ramp is over capacity for a dual lane condition.
- Northbound elements incorporated into option EA-6.
- **Estimated construction cost: \$31 Million. (Does not include Right-of-Way acquisition or utility relocation)**



Legend	
I-83 Mainline	<span style="display:inline-block; width:15px; height:10px; background-color:red;"></span>
Ramps	<span style="display:inline-block; width:15px; height:10px; background-color:yellow;"></span>
Local Roads	<span style="display:inline-block; width:15px; height:10px; background-color:orange;"></span>
Bridges / Culverts	<span style="display:inline-block; width:15px; height:10px; background-color:green;"></span>

SR 0083 Section 040  
Exit 18 & 19 York County

Exit 18 - Mount Rose Avenue  
Alternative 18.6