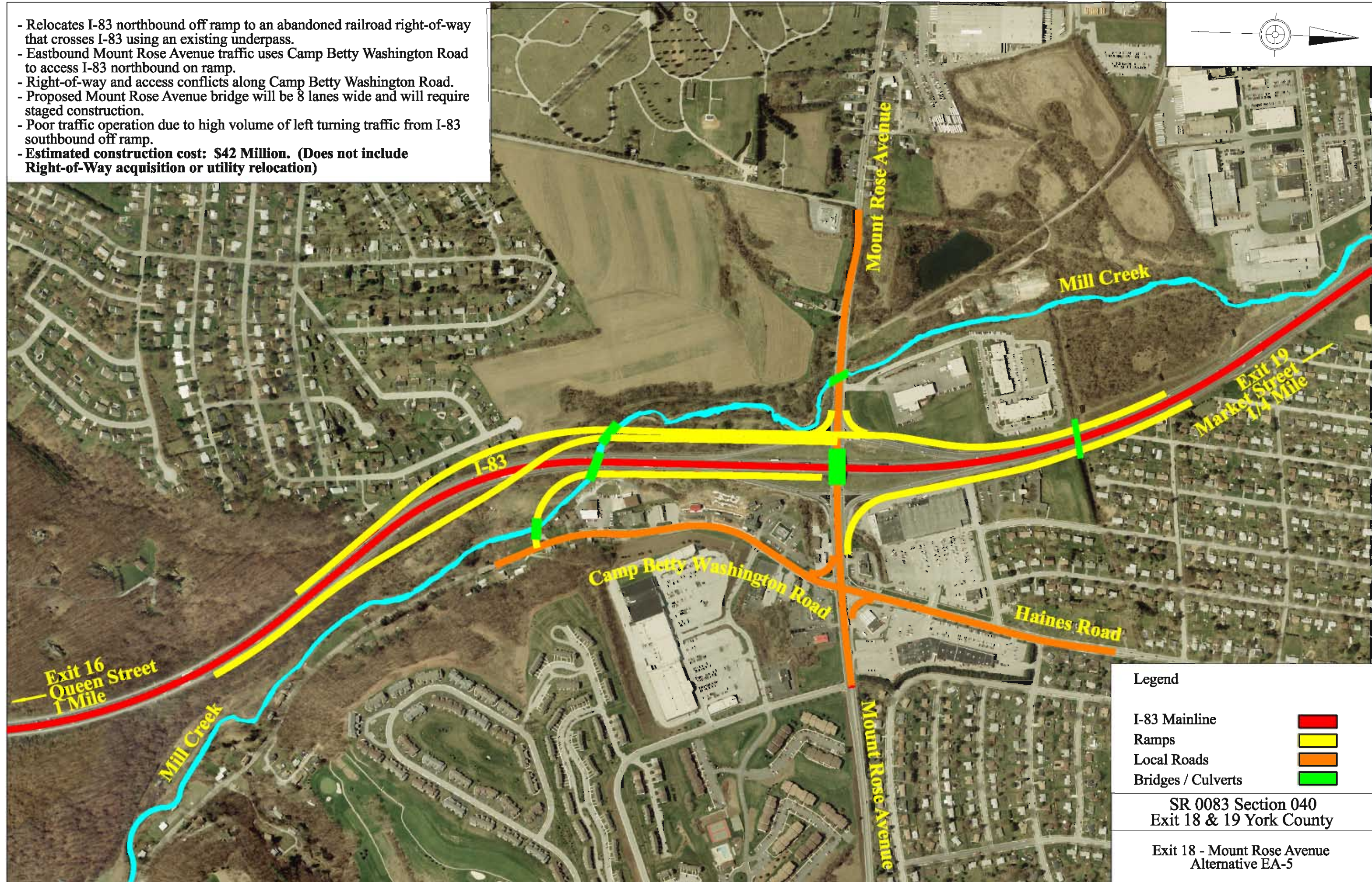
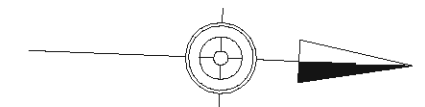


- Relocates I-83 northbound off ramp to an abandoned railroad right-of-way that crosses I-83 using an existing underpass.
- Eastbound Mount Rose Avenue traffic uses Camp Betty Washington Road to access I-83 northbound on ramp.
- Right-of-way and access conflicts along Camp Betty Washington Road.
- Proposed Mount Rose Avenue bridge will be 8 lanes wide and will require staged construction.
- Poor traffic operation due to high volume of left turning traffic from I-83 southbound off ramp.
- **Estimated construction cost: \$42 Million. (Does not include Right-of-Way acquisition or utility relocation)**



Legend

I-83 Mainline	
Ramps	
Local Roads	
Bridges / Culverts	

SR 0083 Section 040
Exit 18 & 19 York County

Exit 18 - Mount Rose Avenue
Alternative EA-5