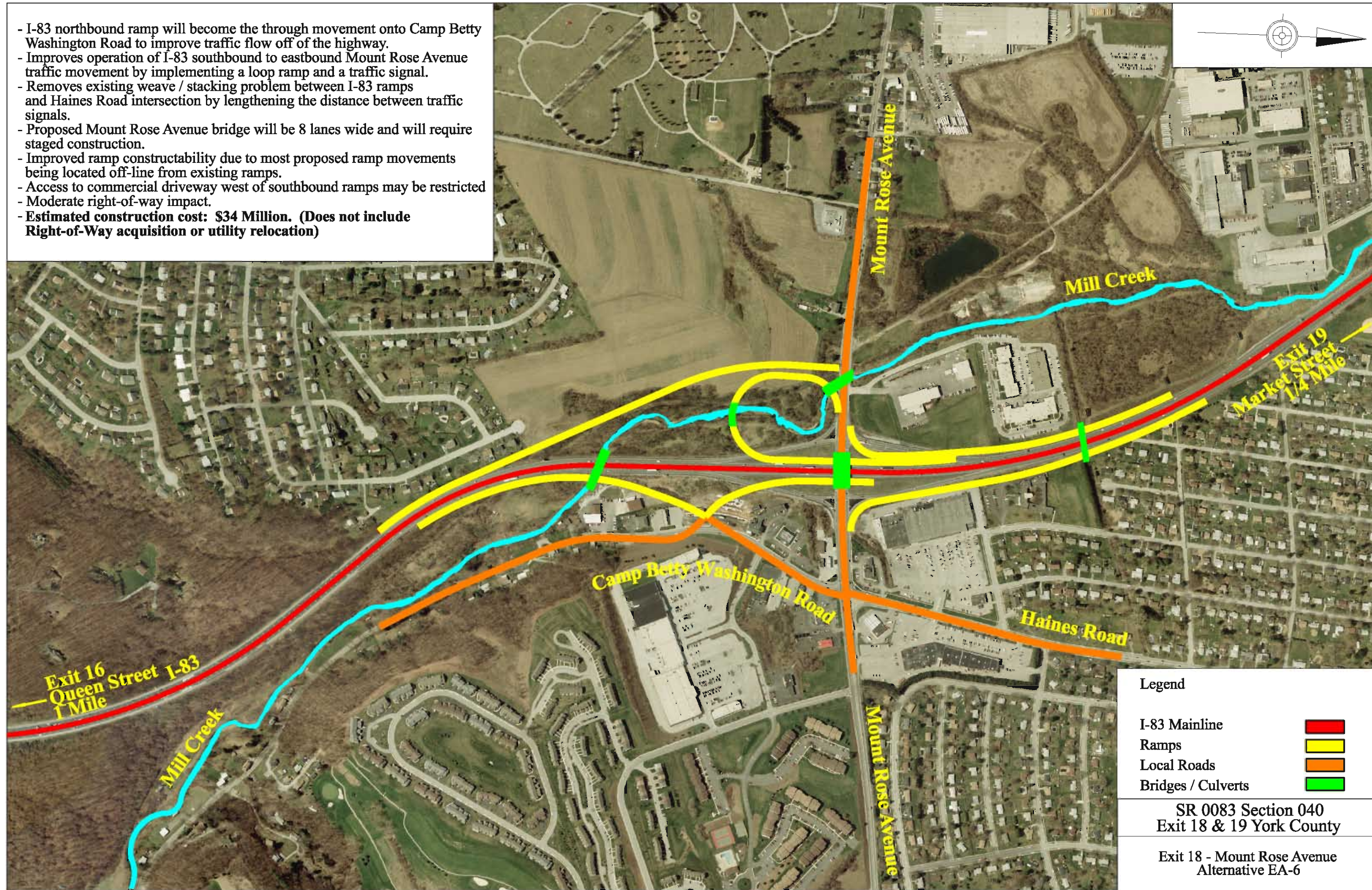
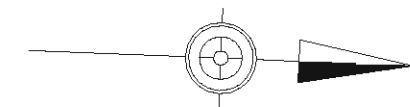


- I-83 northbound ramp will become the through movement onto Camp Betty Washington Road to improve traffic flow off of the highway.
- Improves operation of I-83 southbound to eastbound Mount Rose Avenue traffic movement by implementing a loop ramp and a traffic signal.
- Removes existing weave / stacking problem between I-83 ramps and Haines Road intersection by lengthening the distance between traffic signals.
- Proposed Mount Rose Avenue bridge will be 8 lanes wide and will require staged construction.
- Improved ramp constructability due to most proposed ramp movements being located off-line from existing ramps.
- Access to commercial driveway west of southbound ramps may be restricted
- Moderate right-of-way impact.
- **Estimated construction cost: \$34 Million. (Does not include Right-of-Way acquisition or utility relocation)**



Legend	
I-83 Mainline	
Ramps	
Local Roads	
Bridges / Culverts	

SR 0083 Section 040
Exit 18 & 19 York County

Exit 18 - Mount Rose Avenue
Alternative EA-6